

Software Installation Guide ***System Puma / Hydra***

Valid for the following

HY-T24-TS01	HY-T24-6	HY-T24-7	HY-T26-TS02
HY-T26-TS03	HY-T26-7	HY-R20-3	HY-R20-4
HY-R20-RS01	HY-R21-1	HY-R21-2	HY-R21-Profibus-HI
HY-R21-RS02			

Table of contents

1.	Tele Radio© Software	3
1.1	Download Software	3
1.2	Tele Radio© Flasher	3
2.	Software Kit	4
2.1	Parts Needed	Fehler! Textmarke nicht definiert.
2.2	Assembling the parts	4
3.	Connection to HY-T26-XX Transmitter	Fehler! Textmarke nicht definiert.
4.	Connection to HY-T24-XX Transmitter	Fehler! Textmarke nicht definiert.
5.	Connection to HY-R20-XX	7
6.	Connection to HY-R21-XX	8
7.	Troubleshooting	Fehler! Textmarke nicht definiert.

1. Tele Radio[®] Software

Tel.: +49 (0) 9451 - 944 855 0

1.1 Download Software

kontakt@tele-radio-gmbh.de

Download the latest software from our website.

Link: <https://software.tele-radio-gmbh.de/>

Required software:

„Flasher PANTHER / HYDRA / PUMA“

1.2 Tele Radio[®] Flasher

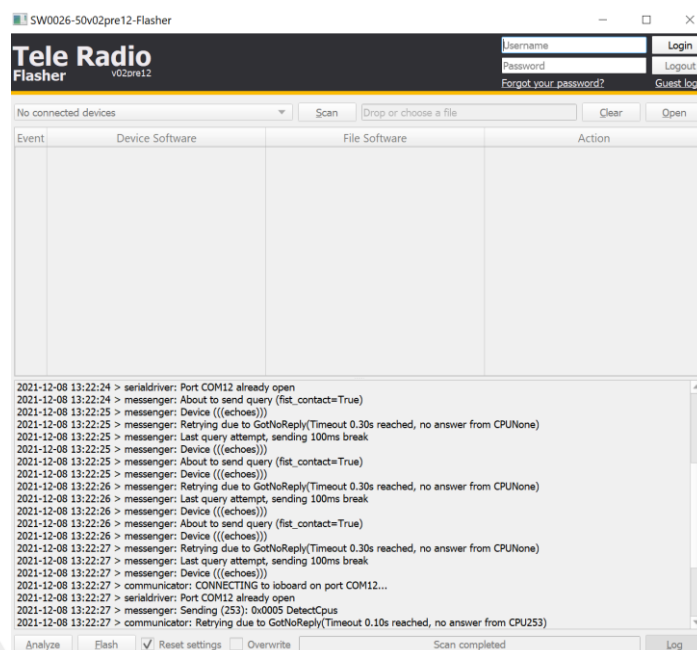
The flasher is used to program ready-made files into the receivers and transmitters of Puma/Hydra.

This can be a standard firmware or a custom firmware.

These files are not adjustable!

The files created with this program are saved as .settings or .tpk files.

1. Press "Guest Login" (top right under "Login/Logout")
2. Turn on the transmitter / Turn on the power supply for the receiver and press "Scan"
3. Open the file or drag and drop the file into the flasher
4. Press "Flash" (bottom left next to "Analyse")



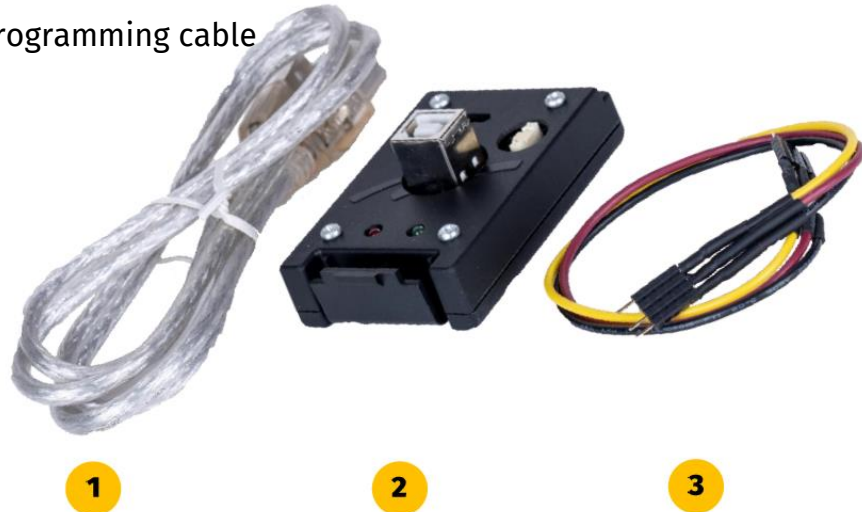
2. Software Kit

2.1 Parts Needed

Tel.: +49 (0) 9451 - 944 855 0
kontakt@tele-radio-gmbh.de

The software kit consists of the following parts:

1. USB-A to USB-B cable (*not included in the package*)
2. [D2-3] Programming adapter
3. [CABLE004-5] Programming cable



2.2 Assembling the parts

1. Connect the USB-B cable to the D2-3 programming adapter
2. Pull out the brown cable on any side of the CABLE004-5.
3. Connect the CABLE004-5 to the D2-3 programming adapter. (Depending on the product to be programmed)
4. Connect the USB-A cable to the computer/laptop



3. Connection to HY-T26-XX transmitter

1. Connect the *USB-B* cable to the *D2-3* programming adapter
2. Remove the battery from the transmitter and insert the *D2-3* programming adapter.
3. Pull the Stop button
4. The connection is active when the green LED on the *D2-3* programming adapter is lit. Check the connection if the red LED should be on. If you have any problems, contact Tele Radio customer service.
5. The orange LED flickers when programming is performed.



4. Connection to HY-T24-XX transmitter

1. Connect the *USB-B* cable to the *D2-3* programming adapter
2. Remove the battery from the transmitter and insert the *D2-3* programming adapter.
3. Pull the Stop button
4. The connection is active when the green LED on the *D2-3* programming adapter is lit. Check the connection if the red LED should be on. If you have any problems, contact Tele Radio customer service.
5. The orange LED flickers when programming is performed.



Remark

Make sure the programming adapter is placed in battery compartment 1 (with 5 contacts). Programming does not work in battery compartment 2.

5. Connection to HY-R20-XX

Tel.: +49 (0) 9451 - 944 855 0

kontakt@tele-radio-gmbh.de

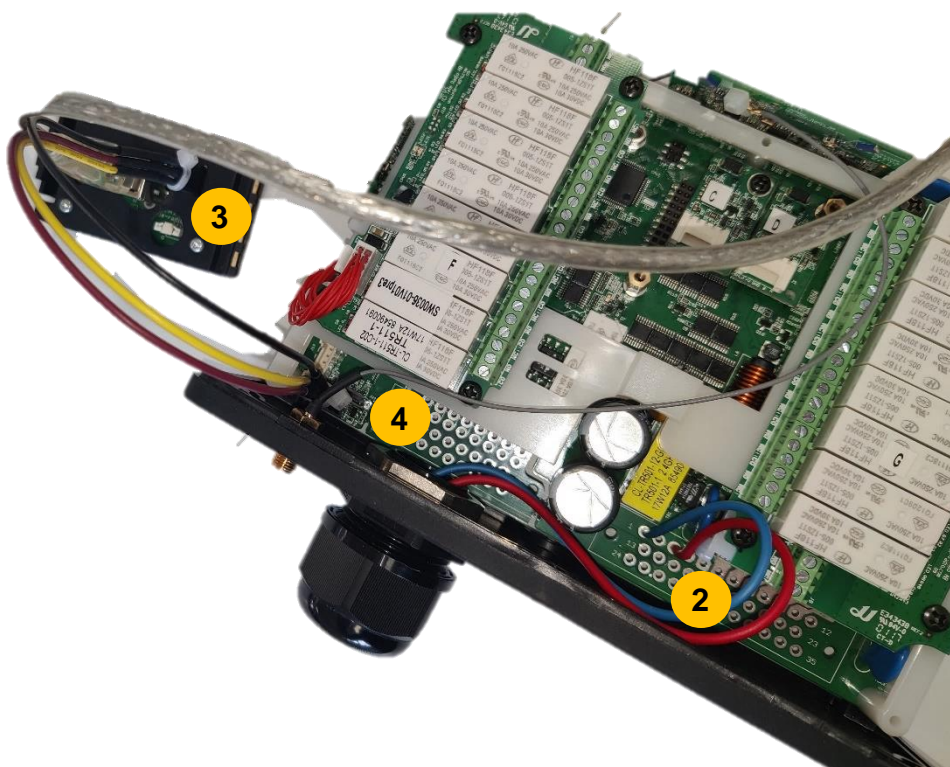
1. Remove the 6 screws to remove the case cover
2. Connect the receiver to an acceptable power supply
3. Connect the CABLE004-5 to the D2-3 programming adapter
4. Connect the other side of the CABLE004-5 to the receiver

Remove the CABLE004-5 BROWN cable

You can just pull it out on one side

5. The connection is active when the green LED on the D2-3 programming adapter is lit. Check the connection if the red LED should be on. If you have any problems, contact Tele Radio customer service.
6. The orange LED flickers when programming is performed.

R20



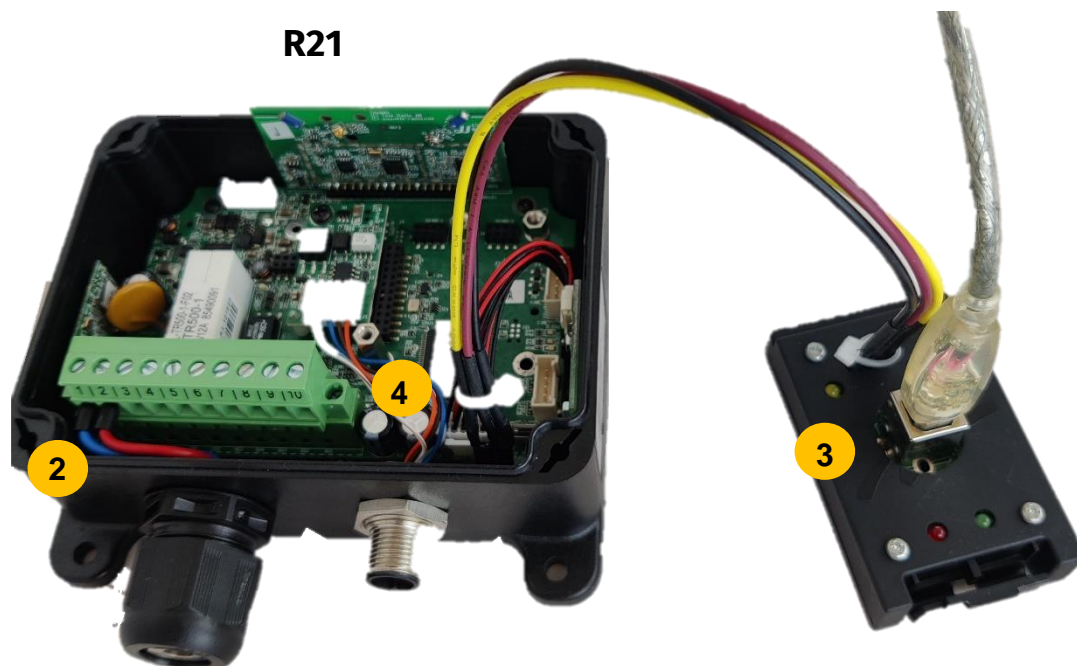
6. Connection to HY-R21-XX

1. Remove the 4 screws to remove the case cover
2. Connect the receiver to an acceptable power supply
3. Connect the CABLE004-5 to the D2-3 programming adapter
4. Connect the other side of the CABLE004-5 to the receiver

Remove the CABLE004-5 BROWN cable

You can just pull it out on one side

5. The connection is active when the green LED on the D2-3 programming adapter is lit. Check the connection if the red LED should be on. If you have any problems, contact Tele Radio customer service.
6. The orange LED flickers when programming is performed.



7. Troubleshooting

1. On my D2-3 programming adapter, the red LED is on.

Check that the USB cable has been inserted correctly. If the cable is plugged in correctly and the LED is still red, contact Tele Radio Customer Service.

2. My transmitter cannot be programmed.

Make sure that the transmitter is on and has not automatically turned off again.

Make sure that the D2-3 programming adapter has been placed in the correct battery compartment.

3. My receiver can't be programmed

Make sure the receiver is powered.